

Caregiver Friendly Communities Assessment

A tool developed by Area Agency on Aging 1-B

Thank you for submitting your Creating Caregiver Friendly Communities Assessment

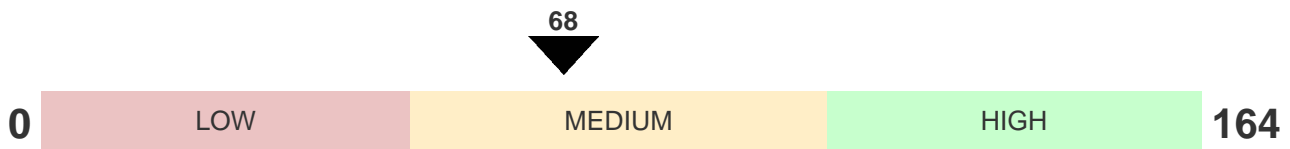
Assessing How Well Communities Support Caregivers of Older Adults

Community Assessed: Sample County

Assessor Name: Amanda Sears

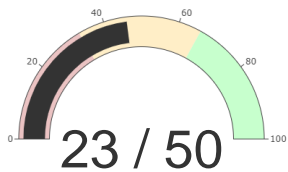
Date of Assessment: November 6, 2020

Overall Score: 68/162

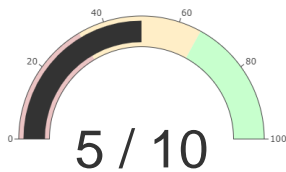


This overall score falls in the **Mid-Low range (42-82)**, out of a total possible points of 164. The Caregiver Friendly Communities Assessment score indicates that this community has established a basic level of programs and supports for caregivers and may show significant strengths in some areas, while also showing significant improvement needed in other areas. Advocates should continue to develop existing programs and look for opportunities to strengthen or add supports and resources where needed. Next steps: reviewing each domain area for specific strengths and weaknesses related to the score and choose 4-5 top areas for improvement. Gather community stakeholders such as city planners and older adult service providers to add input to a plan for improvement.

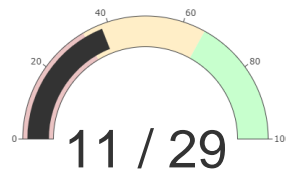
In-Home Services and Respite



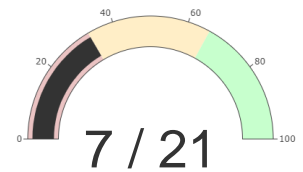
Care Management Support



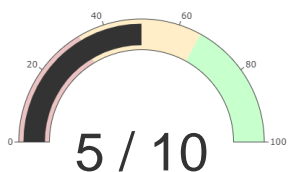
Caregiver Training and Education



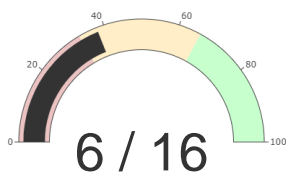
Caregiver Social and Emotional Support



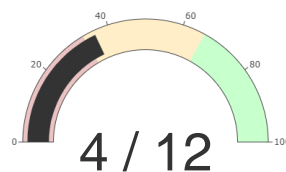
Safe, Affordable, Accessible Housing



Financial and Legal Information



Transportation



Health Care Services

